



GAT MONTHLY MEMBERSHIP PROGRESS REPORT

Results as of: 6/30/2023

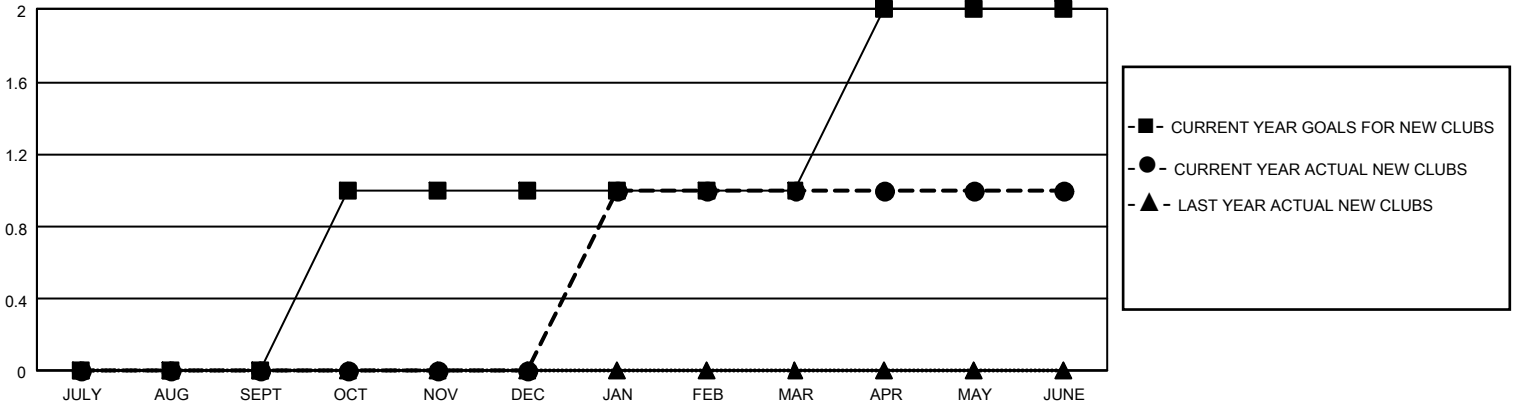
GMT Constitutional Area 2, Group A

REPORT DOES NOT INCLUDE CLUBS IN UNDISTRICTED AREAS.

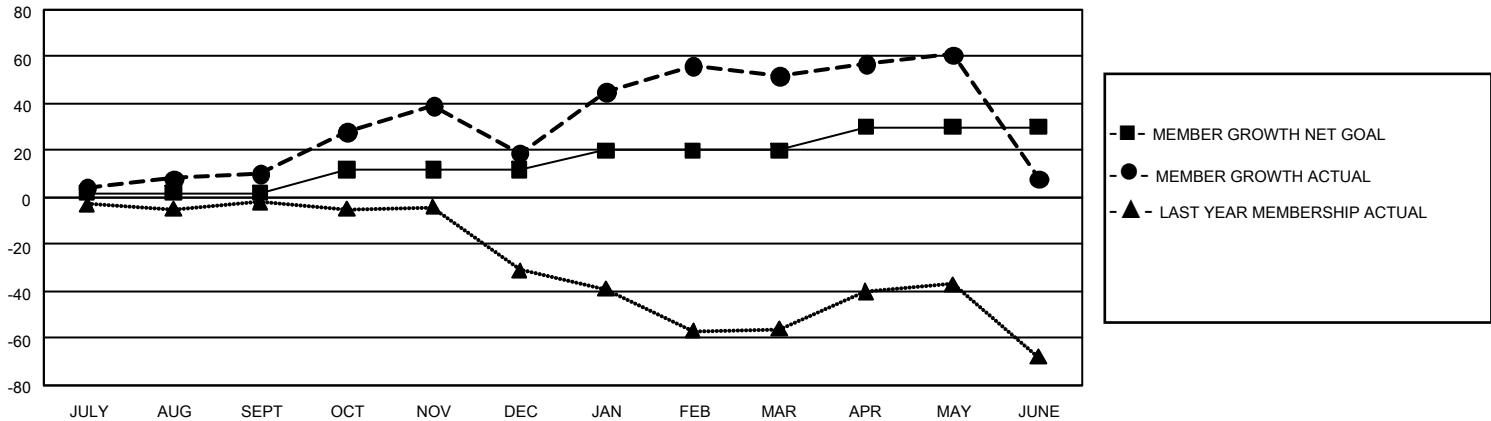
Clubs			
RESULTS FOR 2022-2023			
QUARTER	NEW CLUB GOAL	NEW CLUBS	DROPPED CLUBS
JULY/AUG/SEPT	0	0	0
OCT/NOV/DEC	3	0	1
JAN/FEB/MAR	0	1	0
APR/MAY/JUNE	3	0	3

Members			
RESULTS FOR 2022-2023			
QUARTER	MEMBER GROWTH NET GOAL	MEMBER GROWTH ACTUAL	DROPPED MEMBERS ACTUAL (including transfers)
JULY/AUG/SEPT	2	35	24
OCT/NOV/DEC	10	39	30
JAN/FEB/MAR	8	52	15
APR/MAY/JUNE	10	29	72

GOALS AND ACTUAL NEW CLUBS CUMULATIVE



GOALS AND ACTUAL MEMBERS CUMULATIVE



DROPPED CLUBS: 4	
DROPPED MEMBERS	
DECEASED	3
CLUB CANCELLED	44
OTHER	94
TOTAL	141

30 CLUBS OF 47 ADDED 1 OR MORE NEW MEMBERS

[CLICK HERE FOR CUMULATIVE MEMBERSHIP DATA](#)

GENDER DISTRIBUTION	
MALE	477 (51.90%)
FEMALE	441 (47.99%)
NON BINARY	0 (0.00%)
PREFER NOT TO ANSWER	1 (0.11%)
TOTAL FAMILY UNIT MEMBERS	60
FAMILY MEMBERS PAYING HALF DUES	31